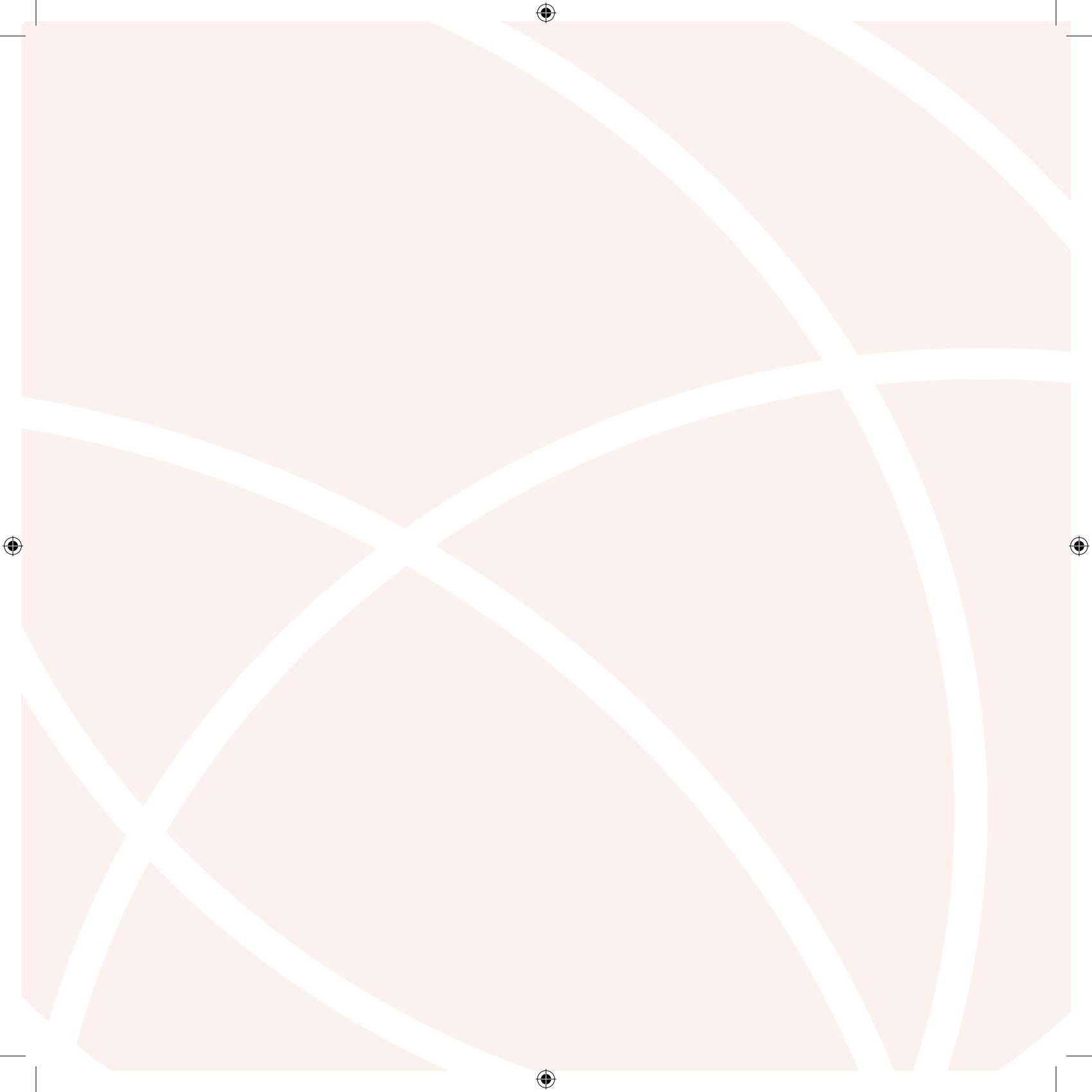




MASTER OF RESEARCH AND PUBLIC POLICY

STEERING RESEARCH FOR EFFECTIVE
PUBLIC POLICIES IN AFRICA







A CONTINENT ON THE RISE

The continent of Africa is no longer a sleeping giant but is blessed with an abundance of natural resources and manpower. Public policy development

is key in steering our continent forward as it looks to take its rightful place on the world stage.

OVERVIEW

COLLABORATIVE MASTER OF RESEARCH AND PUBLIC POLICY (MRPP)

Africa's development challenges call for a unique approach to public policy: an African perspective in defining policy priorities that will lead to true prosperity for the continent's people.

The new Master of Research and Public Policy is designed to propel you to the centre of decision-making in Africa, by equipping you with knowledge and skills in research for public policy, a deep understanding of universal theories and concepts, and an appreciation of the common challenges countries face — from



providing quality universal education and healthcare, to tackling abject poverty and addressing the socio-economic impact of HIV/AIDS — to enabling you to think critically and contribute to the development of public policies.

ABOUT THE PROGRAMME

‘THE AIM OF THIS PROGRAMME IS TO STRENGTHEN THE TRAINING OF SOCIAL SCIENCE RESEARCHERS AND POLICY PRACTITIONERS,’

The Master of Research and Public Policy is a collaborative programme between the Partnership for African Social and Governance Research (PASGR) and 12 universities across Africa which deliver the course uniformly using a common curriculum and award an internationally recognised degree.

The course, designed to international standards by African academics from the 12 universities, embraces public policy both as an area of applied research as well as professional practice. It focuses on social science research and public policy, and is distinct from public administration or public management.



It is based on priorities of the African public policy agenda and is informed by perspectives from social sciences and current development challenges.

The programme gives you a choice of two career pathways: Research or Policy Practice. The Research option will familiarise you with the use of data to undertake policy research or pursue advanced scholarship, while Policy Practice will equip you to use research to influence, inform or shape public policy.

The course is delivered through a combination of innovative pedagogy encompassing interactive teaching approaches such as simulations, debates, role-plays and project-based learning, field experience and learning through case studies.

You will also have continuous interaction with experts in research and policy, who share their knowledge and experiences as guest lecturers, speakers and curriculum reviewers. These interactions will give you an insight on pressing public policy problems and challenge you to seek and find practical solutions.

In addition, you will benefit from linkages that draw in the expertise of academic leaders from selected leading schools of public policy in Europe and America, giving you a global perspective.

Programme structure

The Master of Research and Public Policy is a full-time two-year programme covered in four semesters, including field experience and thesis preparation.

The programme entails five courses in each of the two semesters during the first year. This is followed by a long break for field experience in a policy or research institution during which you refine research ideas and start data collection. In the second year, three courses are offered, while the rest of the time is devoted to thesis development.

Foundation courses address competencies needed by students on both pathways. Concentration courses consolidate competencies on either Research or Policy Practice pathways.

MRPP PROGRAMME ARCHITECTURE

THE MRPP HAS PUT IN PLACE AN ARCHITECTURE FOR A COLLABORATIVE MASTERS IN RESEARCH AND PUBLIC POLICY THAT MEETS INTERNATIONAL STANDARDS AND IS HIGHLY INNOVATIVE FOR AFRICA AND PROBABLY THE WORLD,

SEMESTER 1	SEMESTER 2		LONG BREAK	SEMESTER 3	SEMESTER 4
Qualitative Research Methods for Public Policy	Economics for Public Policy		For students 1. Field experience 2. Data collection For teaching staff 1. Professional development 2. Programme development 3. Research activities	Research, Policy and Public Interface	Thesis seminar
Quantitative Research Methods for Public Policy	Ethics in Research and Public Policy			Gender, Social Diversity, Equity and Public Policy	Thesis work
	CONCENTRATION COURSE ELECTIVES				
Public Policy Development and Analysis	RESEARCH PATHWAY	POLICY PATHWAY		Leadership and Public Policy	Thesis work
Governance and Politics of Public Policy	Advanced Qualitative Methods	Applied Policy Analysis			
	Advanced Quantitative Methods	Contemporary Issues in Public Policy			
Social Science Foundations for Public Policy	Political Economy of Public Policy	Global Context of Public Policy		University-Specific Elective (optional)	University-Specific Elective (optional)

STUDY SUPPORT

The programme will offer you the following:

NETWORK PLATFORM

The Master of Research and Public Policy offers you a platform for exploring opportunities and debating the constraints to effective policy-making in Africa. Your competency profile is developed through continuous interaction with prospective employers in research and policy fields. This interaction gives you an opportunity for practical learning as you work with the experts to identify solutions to existing problems. It also prepares you for employment as you gain insights into work requirements.

INTERNATIONAL LINKAGES

Programme development benefited from exposure to programmes, faculty and students as well as teaching and learning experiences of selected leading public policy schools in Europe and North America.

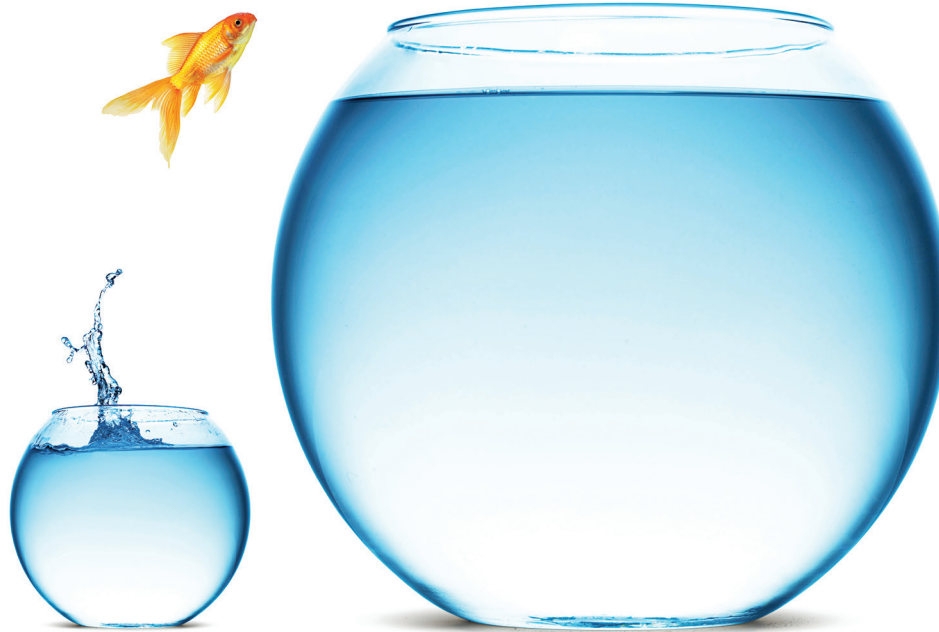
The reciprocal relationships that emerged will enhance sharing of knowledge, teaching and learning resources, staff, best practices and student exchanges while broadening your exposure to current trends and international practices.

E-CASES

‘AS THE CONTINENT PUSHES THE ‘AFRICA RISING’ AGENDA, THE MRPP WILL UTILISE E-CASES TO BRING ISSUES THAT CONFRONT PEOPLE IN THEIR EVERYDAY LIVES TO THE CLASSROOM,’

The programme uses open source digital technology to combine a variety of multimedia resources: video clips, audio clips, charts, graphs, reports, data, pictures, newspaper cuttings and text — to present a compelling and engaging learning experience on a specific public policy or research issue. The e-cases are versatile and can be accessed (via web or university servers) on cell phones or other mobile devices, transforming learning into a dynamic experience inside and outside the classroom.

The process of developing e-cases has a multiplier effect on staff and students. Lecturers are immersed into local, regional and global policy issues, reflecting and working collaboratively to transform ideas into practical teaching materials. The finished products provoke you to analyse and present real policy problems while developing practical solutions.



ENTRY REQUIREMENTS

To qualify, you will require: A Master's degree, or an Upper Second Class Bachelor's degree (or its equivalent GPA) or higher, or a Lower Second Class Bachelor's degree, and at least two years experience in a research or policy field, or a postgraduate diploma.

In exceptional cases, applicants with very strong work experience who do not meet the minimum academic qualifications may be considered in line with respective university norms and practices.

CAREERS AND EMPLOYABILITY

The programme will prepare you for a career in:

- Government
- Universities
- Think tanks
- Research organisations
- Civil society organisations
- Media
- Regional and international organisations

APPLY

EGERTON UNIVERSITY

Dean, Faculty of Education
and Community Studies
P.O. Box 536, Egerton, Kenya
Tel: +254 512 217 891/2
+254 512 217 781
Email: dvcaa@egerton.ac.ke

MASENO UNIVERSITY

Dean, School of Development & Strategic
Studies
Private Bag, Maseno, Kenya
Email: fwanyama@maseno.ac.ke
Tel: +254 573 515 51 or
+254 722 233 479

MZUMBE UNIVERSITY

Director - Research, Publications and
Postgraduate Studies
P.O. Box 63, Mzumbe
Morogoro, Tanzania
Tel: +255 232 604 34
Email: drps@mzumbe.ac.tz
www.mzumbe.ac.tz

UGANDA CHRISTIAN UNIVERSITY

Department of Public Administration and
Governance
P.O. Box 4, Mukono, Uganda
Tel: +256 312 350 880/835/826; +256 794
770 826,
Email: admissions@ucu.ac.ug

UGANDA MARTYRS UNIVERSITY

Department of Governance
and Peace Studies
P.O. Box 5498 Kampala, Uganda
Tel: +256 782 365 878
Email: spgs@umu.ac.ug

UNIVERSITY OF BOTSWANA

Department of Political
and Administrative Studies
Private Bag UB 00705
Gaborone, Botswana
Tel: +267 355 275 7
+267 712 303 65
Email: info@mopipi.ub.bw

UNIVERSITY OF DAR ES SALAAM

College of Arts and
Social Sciences
P.O. Box 35051,
Dar es Salaam,
Tanzania
Tel: +255 767 004 280
Email: johnbaitani@gmail.com
www.coss.udsm.ac.tz

UNIVERSITY OF GHANA

Centre for Social Policy
Studies (CSPS)
University of Ghana
P.O. Box LG 25 Legon, Ghana
Tel: +233 050 313 9815
Email: cpsps@ug.edu.gh

UNIVERSITY OF IBADAN

Department of Sociology
University of Ibadan - Nigeria
Oyo Road
Ibadan, Nigeria
Tel: +234 803 400 6297
Email: socialsciences@ui.edu.ng

UNIVERSITY OF JOS

Dean, School of
Postgraduate Studies
P.M.B 2084 Jos, Nigeria
Tel: +234 732 903 55
Email: postg@unijos.edu.ng

UNIVERSITY OF LAGOS

Head of Department and
Programme Coordinator
Department of Political Science
University of Lagos
Akoka Yaba, Lagos, Nigeria
Tel: +234 018 025 26/231 2
+234 017 403 307
Email: solomonakinboye@gmail.com

UNIVERSITY OF SIERRA LEONE

The Dean,
School of Post Graduate Studies,
Fourah Bay College
A. J. Momoh Street
Tower Hill, Freetown
Sierra Leone
Tel: +232 766 196 56
Email: jolie49@yahoo.co.uk

IN NUMBERS
12
FOUNDER
UNIVERSITIES
OFFERING THIS GRADUATE
PROGRAM IN AFRICA FROM
SEPTEMBER 2014

MRPP FAQs



Q: WHAT'S UNIQUE ABOUT THE MASTER OF RESEARCH AND PUBLIC POLICY?

A: It is the only Master's level public policy programme in Africa with dual focus on social science research and the teaching of public policy.

Q: HOW IS THE PROGRAMME STRUCTURED?

A: A student registers for five courses in each of the two semesters during the first year. This is followed by a long break for field experience in a policy or research institution where the student refines research ideas and starts data collection. In the second year, three courses are offered, while the rest of the time is devoted to thesis development.

Q: WHAT ARE THE MINIMUM QUALIFICATIONS FOR ENROLMENT?

A: • Master's degree, or
• An Upper Second Class Bachelor's degree (or its equivalent GPA) or higher, or
• A Lower Second Class Bachelor's degree, and at least 2 years experience in a research or policy field, or a postgraduate diploma.

In exceptional cases, applicants with very strong work experience who do not meet the minimum academic qualifications may be considered in line with respective university norms and practices.

Q: ARE ANY DISCIPLINES EXCLUDED OR DESIRED FOR ADMISSION?

A: No. The MRPP is designed to appeal across disciplines and experiential backgrounds. For instance, a student of sociology could apply the same way as a medical student interested in health policy.

Q: IS THE PROGRAMME OFFERED ONLINE?

A: No. However, plans are underway for introduction of blended delivery in future, with some of the content offered online.

Q: ARE SCHOLARSHIPS AVAILABLE?

A: Funding mechanisms include a combination of tuition fees, subsidies and grants arranged by individual universities. A competitive student scholarship scheme will be established once additional supporters come on board.

‘WHETHER YOU WISH TO BE A RESEARCHER, AN ACADEMIC OR A POLICY PRACTITIONER, THE MRPP IS DESIGNED TO HELP YOU ACHIEVE YOUR INDIVIDUAL CAREER OBJECTIVES’

Q: IS THERE ANY DIFFERENCE IN PROGRAMME QUALITY WHEN OFFERED BY DIFFERENT UNIVERSITIES?

A: No. All the partner universities and PASGR have signed a Memorandum of Understanding that sets out respective roles and responsibilities. They have agreed to adhere to a common curriculum, similar pedagogy and assessment standards to ensure that the degree is of equal value.

Q: CAN I TRANSFER CREDITS TO ANY OF THE PARTNER UNIVERSITIES?

A: Yes. MRPP courses are weighted equally across the participating universities. For seamless transfer, however, students need to consider synchronisation of academic years of individual universities.

Q: WHAT KIND OF CAREERS DOES THE MRPP PREPARE ITS GRADUATES FOR?

A: The programme has two key career paths that involve either: using research in public policy for work in think tanks, policy NGOs, civil society organisations, governments, private sector and media; or, advanced research/teaching in universities, think tanks and other institutions that conduct research (for instance governments and research NGOs at national, regional and international levels).

Q: WHAT ARE MRPP GRADUATES’ JOB PROSPECTS?

A: Job prospects are good given that MRPP imparts relevant knowledge, skills and experience to its

students. Additionally, the field placement, linkages with research and policy communities as well as continuous involvement of prospective employers give MRPP graduates a competitive edge on the market.

Q: CAN OTHER UNIVERSITIES JOIN THE PARTNERSHIP?

A: The decision on acceptance of new partners lies with the Steering Committee of 12 appointees of vice-chancellors of respective partner universities who provide strategic leadership in programme development and implementation.

Q: HOW CAN I BE INVOLVED IN MRPP?

- A:
- **Student:** Enrol for a brilliant career
 - **Early/Mid-career professional:** Enrol to raise your career profile and advancement.
 - **Research and policy institutions:** Contribute to public policy development by nurturing students through guest lectures, sharing research and policy priorities, offering internship opportunities and also sponsoring your staff to enrol in MRPP.
 - **Government/development partners/philanthropists/business and employers:** Make a difference in public policy development by sponsoring an MRPP student.
 - **Funders/donors:** Make a contribution towards enhancing ongoing staff exchanges, professional development of teaching staff, student and staff research activities and student scholarships.

ABOUT PASGR

The Partnership for African Social and Governance Research (PASGR) is a not-for-profit organisation based in Nairobi, Kenya. It aims to augment the capacity of African individual academics and researchers, as well as their institutions, to produce research that can better inform social policy and governance.

PASGR strengthens research capacity by providing opportunities for professional development of teaching staff and researchers, supporting collaborative initiatives aimed at strengthening graduate education in research for public policy, financing research and providing technical as well as policy outreach and communication support.

To achieve these objectives, PASGR is organised around three core programmes:

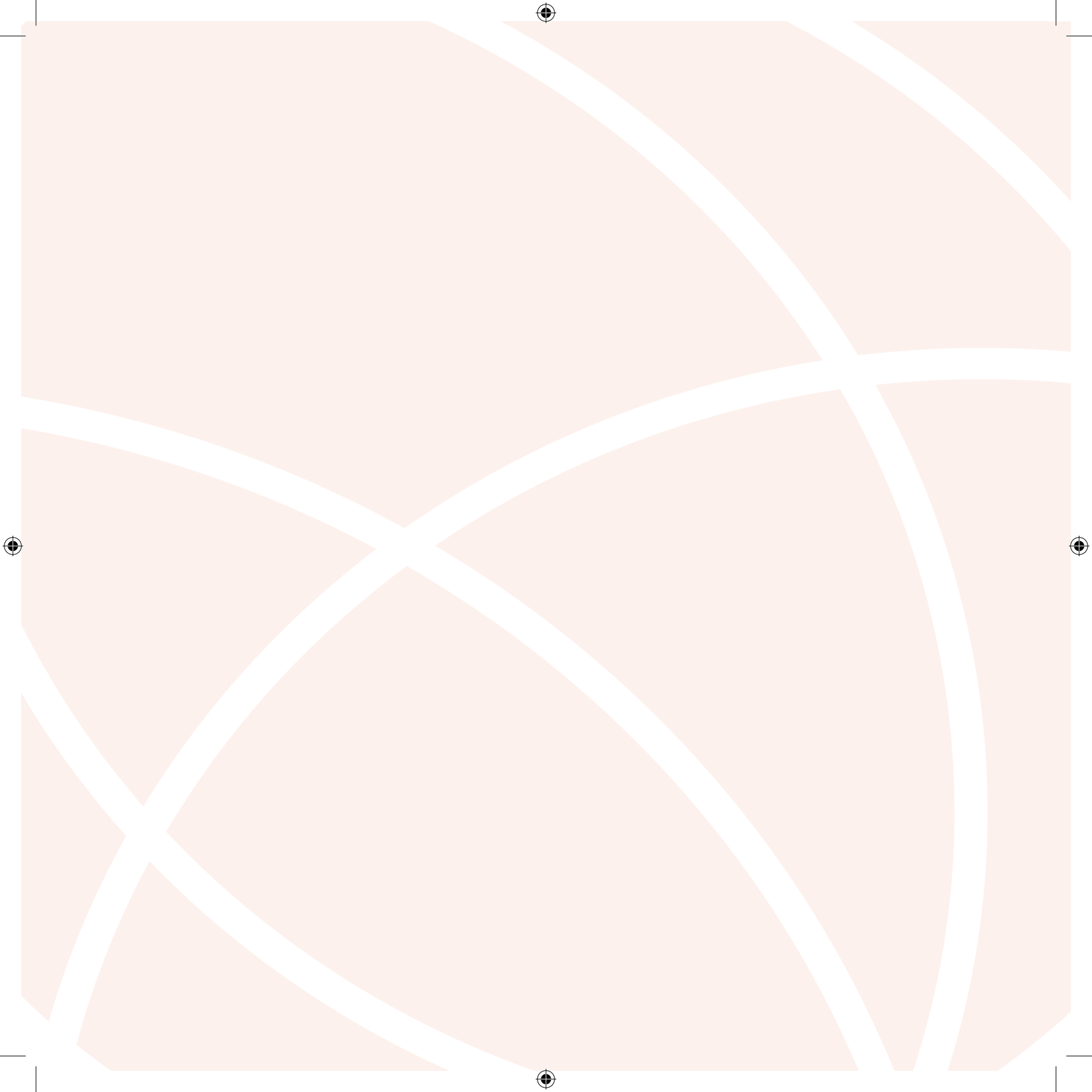
- A Research Programme with a structure and supporting apparatus appropriate for responding to governance-related research questions, and responsive to social policy needs in the region;
- A Higher Education programme supporting collaborative initiatives aimed at strengthening graduate education in research for public policy. In this programme, PASGR is working with 12 universities across 7 African countries to implement a collaborative Master of Research and Public Policy (MRPP programme); and,

- A Professional Development and Training programme that delivers high quality and interactive short courses - offered in a linked fashion or as standalone - that benefit policy actors, experience researchers and academics in the region.

CONTACT US:

**KMA CENTER, 4TH FLOOR. MARA ROAD, UPPER HILL
P.O. BOX 76418 - 00508 NAIROBI, KENYA
EMAIL: INFO@PASGR.ORG
WEBSITE: WWW.PASGR.ORG
TEL: +254 20 298 500 0, +254 729 111 031 OR +254 731 000 065**





MRPP UNIVERSITIES

University of Jos
University of Sierra Leone
University of Ibadan
University of Lagos
University of Ghana

Uganda Christian University
Uganda Martyrs University
Maseno University
Egerton University

University of Dar es Salaam
Mzumbe University

University of Botswana

pasgr.org
PARTNERSHIP FOR AFRICAN SOCIAL
& GOVERNANCE RESEARCH